

# apollo<sup>®</sup>

**DRILL** PRECISE,  
**BUILD CONFIDENCE.**



**Apollo DW 235**

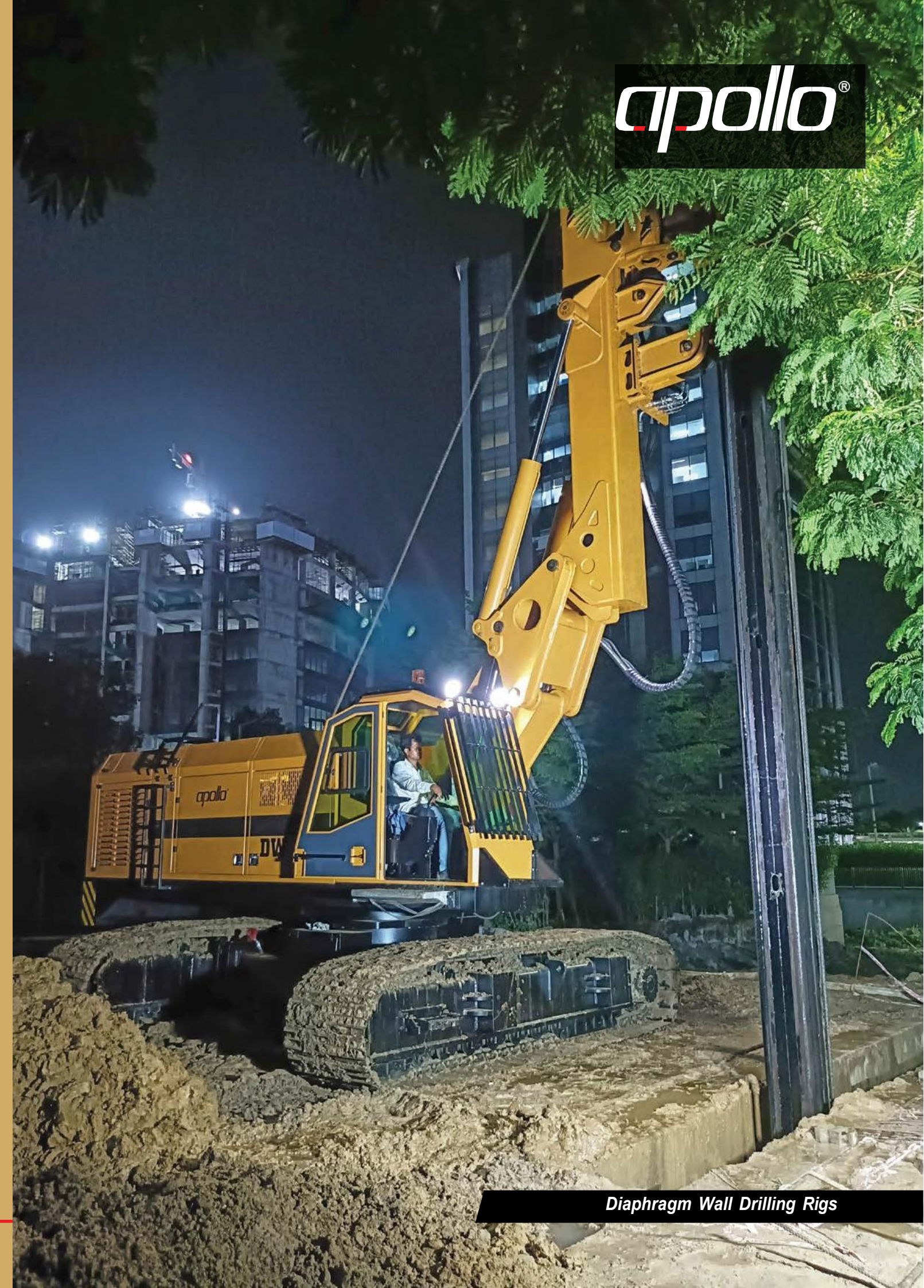
**India's First**

**Diaphragm Wall Drilling Rigs  
Machine Manufacturer**

# Elevate your construction dream with our Drilling Rig

A diaphragm wall drilling rig, also known as a diaphragm wall grab, is specialized construction equipment used in foundation engineering and civil construction projects. Its primary purpose is to create deep and precisely controlled vertical trenches or walls in the ground, serving as essential structural elements in various construction applications, including building foundations, underground structures, and retaining walls. Apollo Techno Group, a leader in manufacturing road construction equipment for over four decades, has expanded its expertise to become India's first manufacturer of diaphragm wall drilling rig.

With extensive experience in equipment manufacturing and the insights gained from our years of operation, Apollo Techno Industries Private Limited pioneers in Horizontal Directional Drilling machinery, establishing us as a key player in the drilling machinery industry within domestic and international markets. We produce various types of directional drills, mud pumps, rotary drilling rigs, diaphragm wall drilling rigs, and downhole tooling, all complemented by on-site services. Our modern manufacturing processes and SAP ERP systems ensure the timely availability of spares, underscoring our commitment to delivering quality and customer satisfaction.

The Apollo logo is displayed in white text on a black rectangular background in the top right corner of the page.

Diaphragm Wall Drilling Rigs

# Digging Deeper, Building Stronger

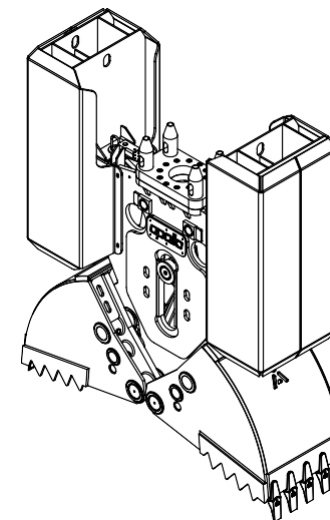
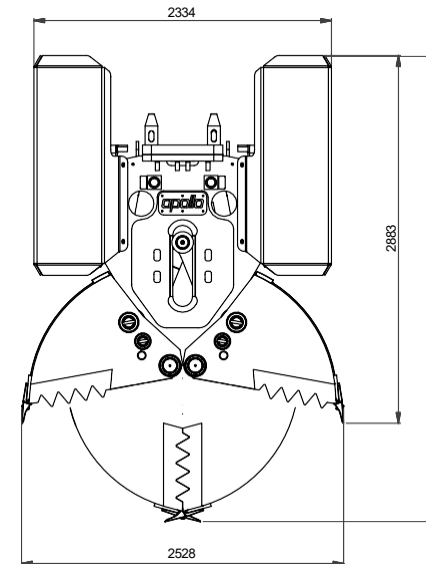
- ☑ Dual-acting cylinder for enhanced performance
- ☑ Undercarriage designed and manufactured by APOLLO in India
- ☑ Powered by a CATERPILLAR engine (USA made)
- ☑ High-strength Grab body with versatile interchangeability ranging from 400 to 800 mm
- ☑ Square kelly bar made from a single piece of high-strength steel material
- ☑ Easy on-site installation
- ☑ Proudly **MADE IN INDIA**, offering direct service and parts support



**apollo**<sup>®</sup>

## Apollo DW 235 Technical Specifications

ENGINE	
Engine Model	Cat C 9.3 (USA made)
Rated Power & RPM	335 hp (250 kW) @ 2200 rpm
UNDER CARRIAGE	
Working (Extended)	4385.5 mm
Track Length	4915 mm
Track Center Length	2310 mm
Shoes Width	800 mm
FLUID CAPACITIES	
Hydraulic Tank	800 L
Fuel Tank	430 L
GRAB DIMENSIONS	
Depth of Excavation	30 m
Width of Trench	400 - 800 mm
Length of Trench	2200 - 2500 mm
Kelly Rotation	±45 degree
Max Closing Force	120 T
Rope Diameter	28 mm
TRANSPORT DIMENSIONS	
Width	3110 mm
Height	3200 mm
Length	7471 mm
Weight	58000 kg



Diaphragm Wall Drilling Rigs

# The Future is Built on Solid Ground



World-class manufacturing is at the core of Apollo Techno. Throughout the manufacturing process, our facilities ensure that every step, from design to production to assembly, adheres to the highest standards of quality. Situated in India's prime strategic location on the Gujarat (Ahmedabad-Mehsana state highway) with over 37,000 square meters of space, our workshops blend modern manufacturing practices with cutting-edge technology. Each workshop is equipped with state-of-the-art manufacturing and assembly lines, capable of accommodating a large number of machines and various variants. Our constant focus on automation and technology has established us as a leader in India's Horizontal & Vertical Drilling market and positioned us at the top of the industry.

While manufacturing machines, we prioritize safety, maintenance, user comfort, and the life cycle cost. To provide the best machine experience to our customers, our dedicated engineering and quality team ensures the production of superior machines, resulting in rapid growth in the global demand for our machines.



**Our other Range of Products**  
Horizontal Directional Drill, Rotary Drilling Rig & Mud Pumps

# Nationwide Support

Regardless of your location, Apollo Techno is dedicated to providing exceptional after-sales support and genuine spare parts to our customers. Our nationwide network of engineers and factory-trained technicians is always prepared to assist you with cost-effective service solutions to ensure your machine operates at peak performance. Our warehouse operates using SAP ERP to manage and integrate spare parts availability on time. We also offer on-site training support for preventive maintenance and equipment safety for our customers' operators.

Our Annual Maintenance Contracts (AMC) present a highly cost-effective option for our customers. This long-term comprehensive service contract covers unexpected breakdowns, helping to reduce maintenance costs and extend the product's lifespan.



© Apollo Techno Industries Ltd may upgrade specifications without any prior notice. Accessories shown with product may optional and not a part of standard supply.

# apollo<sup>®</sup>

**Head Office & Manufacturing Plant:**  
**Apollo Techno Industries Limited**  
Survey No. 60, Ahmedabad-Mehsana Highway,  
Mandali - 384455, Dist.: Mehsana, (Gujarat) India.  
+91 99090 14960, 90990 77566  
[info@apollo techno.com](mailto:info@apollo techno.com) | [www.apollotechno.com](http://www.apollotechno.com)

Find us on:   

**Our Presence :** Ahmedabad, Bengaluru,  
Bhopal, Chennai, Delhi, Kolkata,  
Lucknow, Mumbai, Ranchi

**Global Presence :** UAE, Oman,  
Saudi Arabia, Russia,  
Netherlands, Lebanon, Egypt

